

MONTHLY MEMBERSHIP PROGRESS REPORT

District 14 J

Results as of: 11/30/2023

GMT:

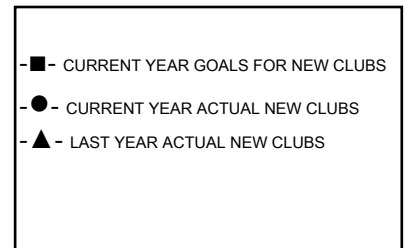
LOCATION PENNSYLVANIA

GMT CA

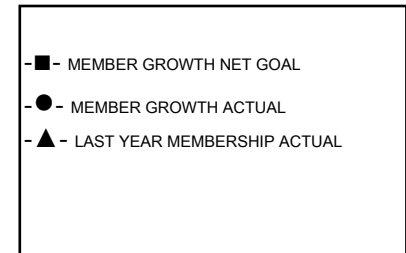
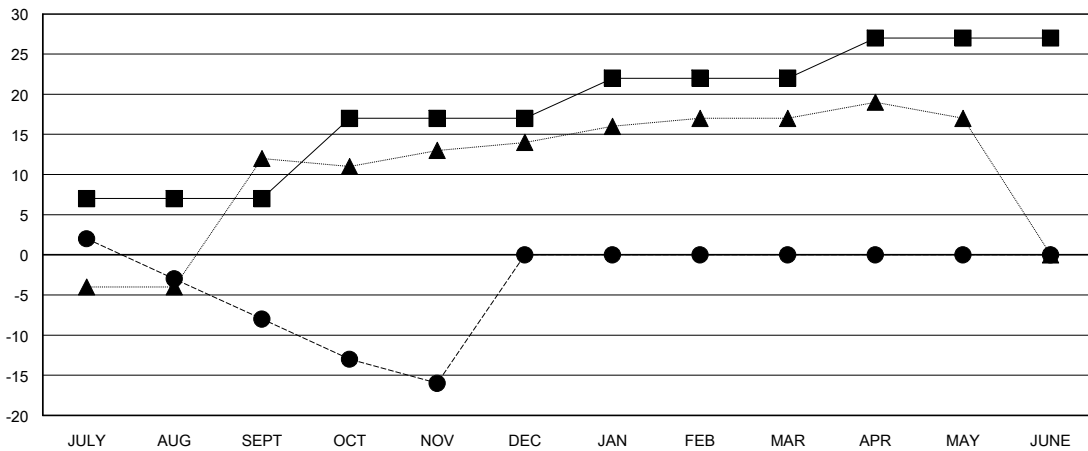
Clubs			
RESULTS FOR 2023-2024			
QUARTER	NEW CLUB GOAL	NEW CLUBS	DROPPED CLUBS
JULY/AUG/SEPT	0	0	0
OCT/NOV/DEC	1	0	0
JAN/FEB/MAR	0	0	0
APR/MAY/JUNE	0	0	0

Members			
RESULTS FOR 2023-2024			
QUARTER	MEMBER GROWTH NET GOAL	MEMBER GROWTH ACTUAL	DROPPED MEMBERS ACTUAL (including transfers)
JULY/AUG/SEPT	7	9	16
OCT/NOV/DEC	10	5	13
JAN/FEB/MAR	5	0	0
APR/MAY/JUNE	5	0	0

GOALS AND ACTUAL NEW CLUBS CUMULATIVE



GOALS AND ACTUAL MEMBERS CUMULATIVE



DROPPED CLUBS: 0	6 CLUBS OF 27 ADDED 1 OR MORE NEW MEMBERS	GENDER DISTRIBUTION
		MALE 483 (65.09%)
		FEMALE 259 (34.91%)
DROPPED MEMBERS	CLICK HERE FOR CUMULATIVE MEMBERSHIP DATA	TOTAL FAMILY UNIT MEMBERS 220
DECEASED 5		FAMILY MEMBERS PAYING HALF DUES 114
CLUB CANCELLED 0		
OTHER 24		
TOTAL 29		